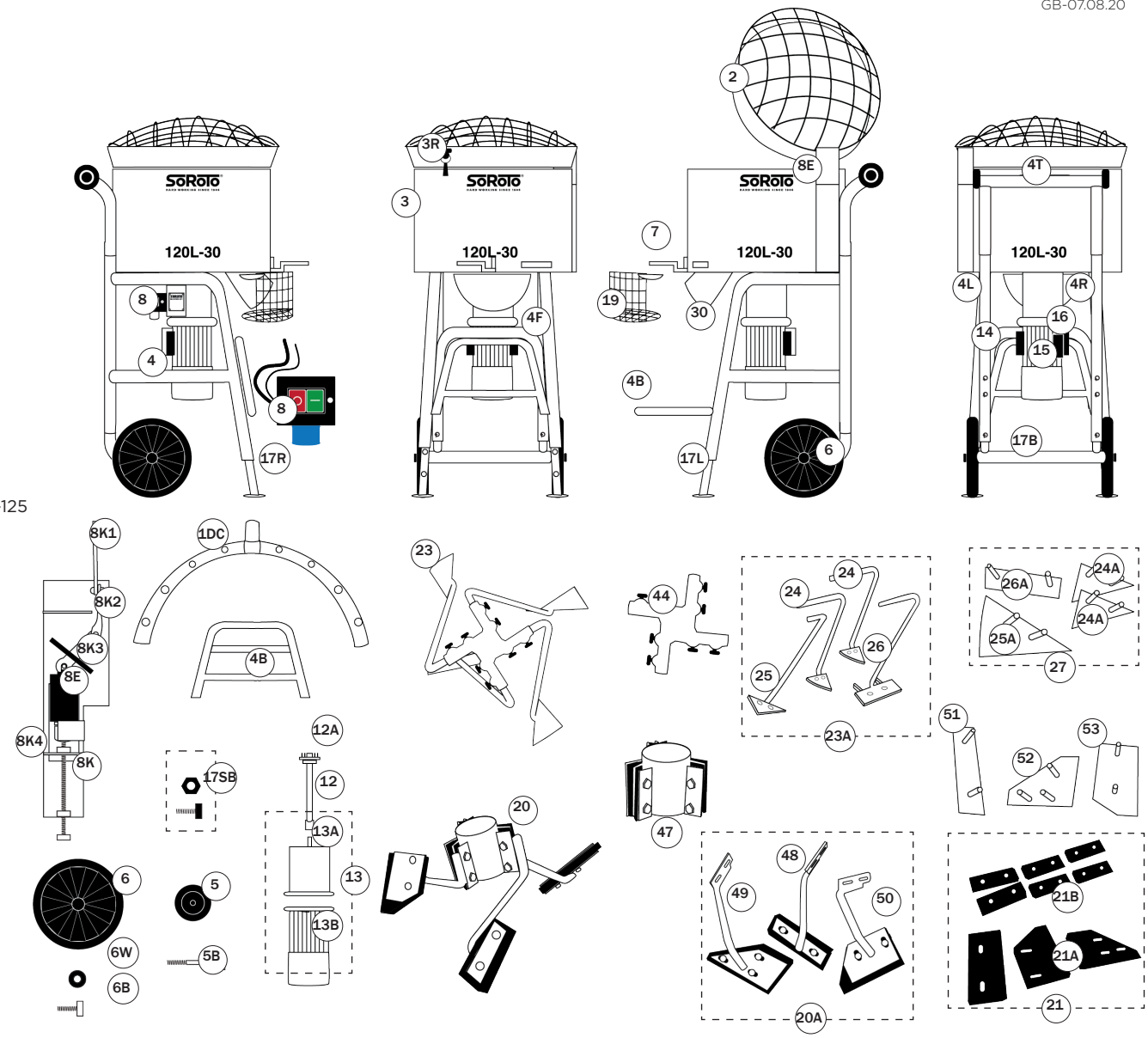


POS.NO.	DESCRIPTION	SPARE PART NO.
1 DC*	Dust Controller.....	120 001DC
2	Grid lid (hinge 100 mm).....	120 002
3	Mixer drum incl. mixer gate, complete.....	120 003
3 R	Rubber strap for grid lid.....	120 003R
4	Frame, complete w/wheels.....	120 004
4 B	Bucket stand.....	120 004B
4 F	Frame, front — u-shape.....	120 004F
4 L	Frame, left side.....	120 004L
4 R	Frame, right side.....	120 004R
4 T	Frame, top/rear.....	120 004T
5	Loading wheel (1 pc.), 80 mm, excl. bolt.....	120 005
5 B	Bolt (1 pc.) for 80 mm loading wheel.....	120 005A
6	Wheel (1 pc.), 300 mm, excl. bolt.....	120 006
6 B	Bolt (1 pc.) for 300 mm wheel.....	120 006B
6 W	Washer (1 pc.) for 300 mm wheel.....	120 006W
7	Mixer gate incl. bolt.....	120 007
8	Switch 9.5 Amp. w/thermal circuit breaker.....	120 008
8 E	Safety switch — by the grid lid.....	120 008E
8 K	Cassette for safety switch, complete.....	120 008K
8 K1	Piece for safety switch, bended metal part.....	120 008K1
8 K2	Piece for safety switch, twisted metal part.....	120 008K2
8 K3	Piece for safety switch, rubber part.....	120 008K3
8 K4	Piece for safety switch, sleigh.....	120 008K4
12	Drive shaft.....	120 012
12 A	Spring pins, complete set of 4 pcs. incl. a jig.....	120 012A
13	Gear motor 1.1 kW, 30 RPM, 240V.....	120 013
13 G	- Gear only.....	120 013G
13 M	- Motor only.....	120 013M
14	Starting capacitor 125 µF.....	120 014_100-125
15	Operating capacitor 25 µF.....	120 015_25
16	Phase capacitor 20 µF.....	120 016_20
17 B	Telescopic leg (1 pc.), rear.....	120 017B
17 L	Telescopic leg (1 pc.), front — left side.....	120 017L
17 R	Telescopic leg (1 pc.), front — right side.....	120 017R
17 SB	Bolt and nut (1 set) for telescopic leg (1 pc.).....	120 017SB
19	Safety grid— by the mixer gate.....	120 019
20 *	Mixer arms w/rubber, 3 pcs. complete set.....	120 020
20 A*	Mixer arms w/rubber, 3 pcs., wo/cross joint.....	120 020A
21 *	Rubber (replacement set, complete).....	120 021
21 A*	Rubber (replacement set, blades only).....	120 021A
21 B*	Rubber (replacement set, for cross joint only).....	120 021B
23	Mixer arms, 4 pcs., complete set.....	120 023
23 A	Mixer arms, 4 pcs., wo/cross joint.....	120 023A
24	Mixer arm (1 pc.), Side.....	120 024
25	Mixer arm (1 pc.), Side-base.....	120 025
26	Mixer arm (1 pc.), Rake.....	120 026
24 A	Mixer blade, steel, Side.....	120 024A
25 A	Mixer blade, steel, Side-base.....	120 025A
26 A	Mixer blade, steel, Rake.....	120 026A
27	Mixer blades, steel, complete set of 4 pcs.....	120 027
30	Discharge chute incl. nuts.....	120 030
44	Cross joint for mixer arms, steel.....	120 044
47 *	Cross joint for mixer arms, rubber.....	120 047
48 *	Mixer arm w/rubber, Rake.....	120 048
49 *	Mixer arm w/rubber, Side-base.....	120 049
50 *	Mixer arm w/rubber, Side.....	120 050
51 *	Bracket for mixer blade, Rubber, Rake.....	120 051
52 *	Bracket for mixer blade, Rubber, Side-base.....	120 052
53 *	Bracket for mixer blade, Rubber, Side.....	120 053

# SPARE PART LIST - 120L, 240V



GB-07.08.20



\*OPTIONAL EXTRA